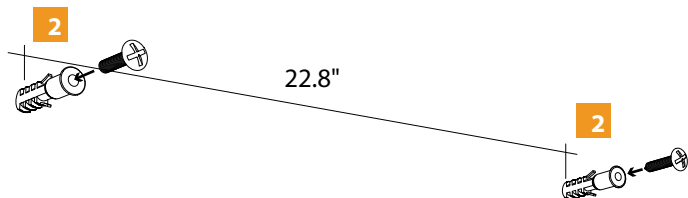


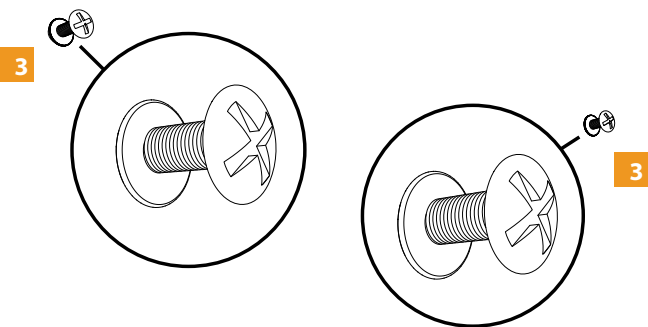
Installation instructions for MRRT2432LED30K Mason Mirror

1 Turn off power.

2 Make small marks in the wall as in figure below:

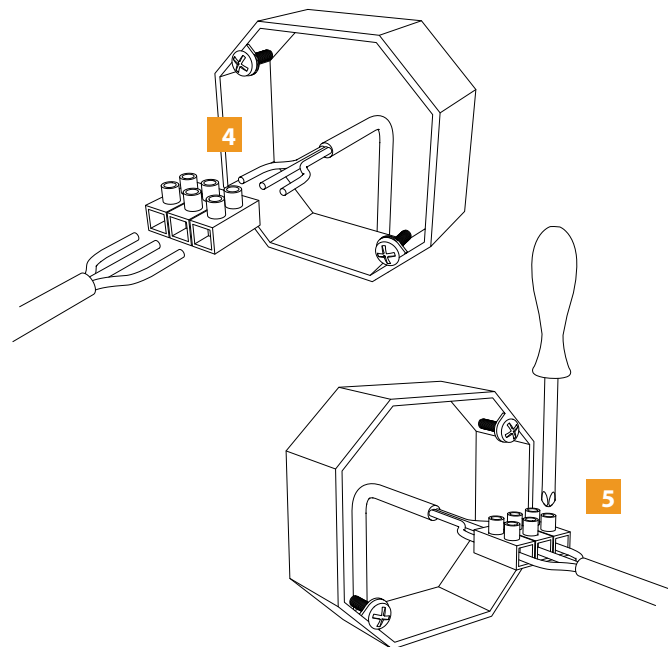


3 Leave a small segment of the screws outside the wall plugs.



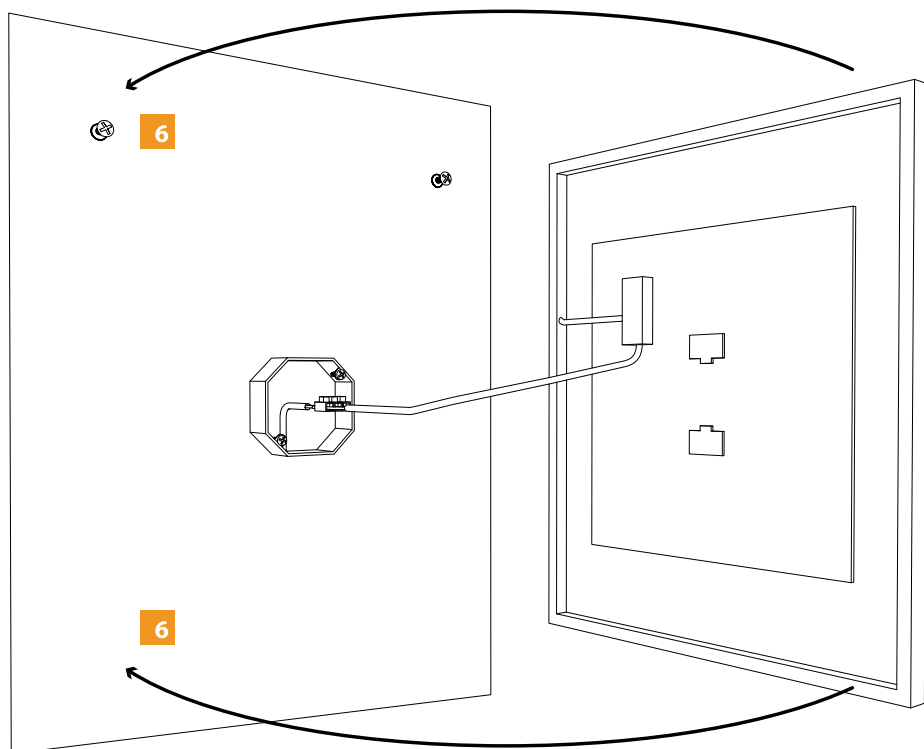
4 Wire black, white and green wires from JBox to connector.

5 Wire black, white and green wires from mirror driver to connector.



6 Mount mirror body onto screws installed in the wall.

7 Apply power.



SAVE THIS INSTRUCTIONS